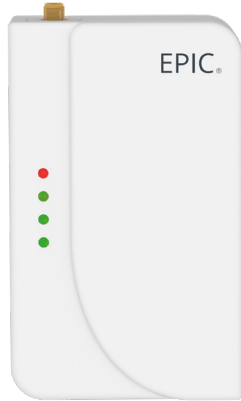




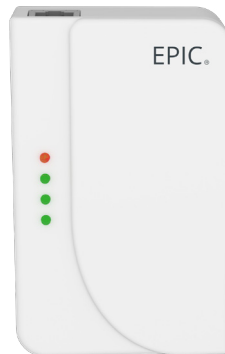
Products



surf-km & surf-k

LTE

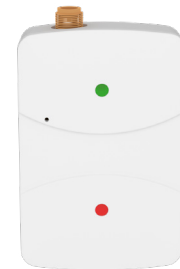
KEYBUS + Dial
Capture Monitoring



aero-k

Wi-Fi/Ethernet

KEYBUS + Dial
Capture Monitoring



surf

LTE

Dial Capture
Monitoring

Alarm Communicators + Cloud Platform

Epic Safety brings you a line of primary alarm communicators that offer comprehensive hardware, firmware, and cloud platform.



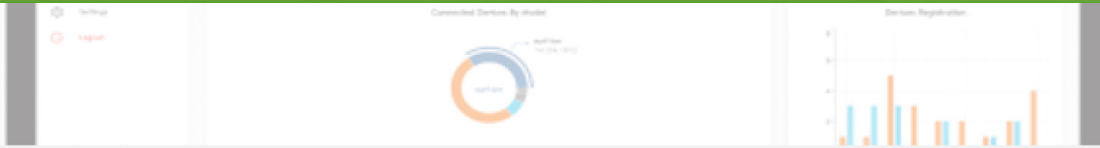
- Take over any alarm system whether locked or not
- Monitor alarm using landline and LTE/IP account simultaneously
 - Remote panel programming with mobile keypad
- Monitor any system with minimum to no programming
 - Full control of user functions on mobile keypad

Comprehensive, Flexible and Secure

- Auto detection and mapping of partitions and zones
- Full supervision and automatic device & panel status detection
 - Alarm Monitoring and full interactive on 4-wire keybus
 - Flexible use of 2 PGMs for automation



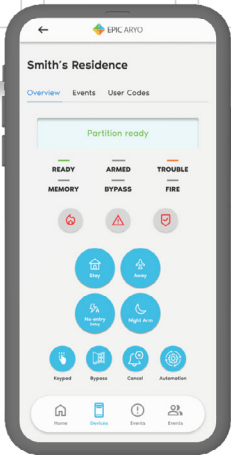
ARYO Cloud Platform



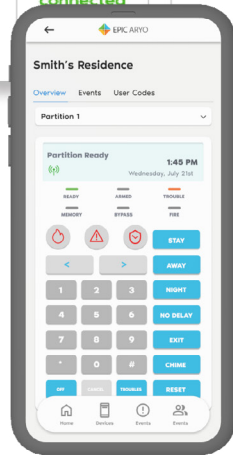
View System

[Surf-km](#) Panel Status Panel Config Troubles Surf Troubles Events Service Required CMS Configurations CMS Forwarding Automations Subscriptions

Device Status



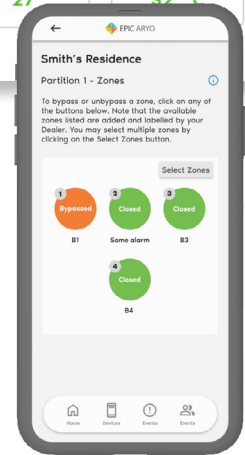
Command Based Interactive



Full Function Mobile Keypad



Real-time Alerts & Notifications



Bypass & Group Bypass



Deliver Exceptional User Experiences

- View zones, partitions, events and status on 8 partitions or account numbers
- Permission-based roles and functions for maximum security
- Modernize older systems
- Panel and device troubles and remote diagnostics
- Get comprehensive reports and analytics



www.epicsafety.com
sales@epicsafety.com

Click here [Become a Dealer](#)



Features

| | aero-k | surf-km/ surf-k (CAT-M1) / (NB-IoT) | surf NB-IoT |
|---|----------------------|---|-----------------------|
| Cellular (5G Ready) | | | |
| Ethernet-WiFi | ✓ | | |
| Keybus Monitoring (DSC & Honeywell) | ✓ | ✓ | |
| Mobile keypad | ✓ | ✓ | |
| Dial Capture Monitoring (CID & SIA) | ✓ | ✓ | ✓ |
| Keyswitch Arming | (up to 2 partitions) | (up to 2 partitions) | (1 partition) |
| Legacy Panel Monitoring | ✓ | ✓ | - |
| Automatic Device & Panel Status Detection | ✓ | ✓ | ✓ |
| Notifications (Push, Email, Audible) | ✓ | ✓ | ✓ |
| Multi-partition Monitoring | (up to 8 partitions) | (up to 8 partitions) | - |
| Remote Control | (up to 8 partitions) | (up to 8 partitions) | (1 partition) |
| Automation | Y | Y | N |
| Dealer Programming | Y | Y | N |
| Zone Inputs | 4 | 4 | 1 |
| PGMs | 2 | 2 | 1 |
| Dimensions | 115*70*26.7 mm | 120*70*26.7 mm | 57.5*37.5*14.75 mm |

 Proudly Canadian.